



ARCHITECTS / ENGINEERS / PLANNERS  
 CONSTRUCTION / INTERIOR DESIGNS  
 MANAGEMENT CONSULTING / INFRASTRUCTURE  
 TURNKEY PROJECT MANAGEMENT COMPANY

(An ISO 9001: 2015 Certified Company)  
 (SSI-MSME (EM-II), Govt. of West Bengal Registered Company)  
 (NSIC, Govt. of India - CRISIL Verified Company)  
 India Top 10 Project Management Company for setting up  
 Projects - MBBS Medical College, AYUSH Medical College,  
 Pharmacy College, Nursing College, Hospitals etc.

# HOSPIMED

(SERVING 30 YEARS IN HEALTHCARE INDUSTRY)

INDIA'S TOP 10 PROJECT MANAGEMENT  
 COMPANY FOR SETTING UP:-

- ✓ Multi & Super Speciality Hospital Project
- ✓ MBBS Medical College Project
- ✓ Ayush Medical College Project
- ✓ Nursing College Project
- ✓ Para Medical College Project
- ✓ Pharmacy College Project
- ✓ Diagnostic Centre Project
- ✓ Modular OT Project, Etc



BUILDING  
**HEALTHCARE**  
 FOR A BETTER TOMORROW

 300+ PROJECTS COMPLETED	 30+ YEARS OF EXCELLENCE	 ACROSS INDIA PRESENCE & ABROAD	 TRUSTED BY LEADERS IN HEALTHCARE
--	--	---	---

Scan QR Code  
 Review us on Google



Hospimed Group



[www.hospimedgroup.com](http://www.hospimedgroup.com)

Serving healthcare industry from last three decades

## HOSPIMED ACHIEVEMENTS

- India's Top 10 Project Management Company (PMC) – Dedicated For Hospitals, Diagnostic Centre, MBBS & Dental Medical College, Nursing and Pharmacy College, Para Medical College, Ayush Hospital Projects.
- India's Top 10 Turnkey Service Provider for Low Cost Hospital Project Architecture, Engineering Drawing and Designing, Planning of MEP, HVAC, AHU, Fire Safety, & Medical Equipment, Project Management, and Complete Commissioning under one roof.
- Authentic Lead and Internal Auditors for NABH / NABL / ISO / QCI / QAI / JCI / IQMCB Accreditation Consultancy Services in India and Abroad.
- Trusted for more than 30 Years, Serving More Than 300 clients In India and Abroad.
- Complete End-to-End Solution for Low Cost Corporate Hospitals & Healthcare Project Set-up in Peripheral Districts and Suburban Areas.
- India Low Cost Hospital & Healthcare Project Set-up.



## HOSPIMED EXPERTISE

- Complete Turnkey Project Solutions from Concept To Commissioning of Hospital & Medical College Projects.
- Highly Specialized Critical Care & Cath Lab, Cancer Care with LINAC & Radiation Therapy Project Set-up
- Renovation of existing Hospital as per NABH guidelines at the most affordable cost.
- Setting Up Fully Functional Blood Bank and Organ Transplant Facilities.
- Hospital PPR, DPR, Feasibility Study, Market Survey, BOQ Preparation, & Project Master Planning.
- Hospital NABH, JCI, ISO accreditations, CE Licence, PNDT, AERB, Pollution Clearance, Fire Safety Certification, OBPAS, Municipality approvals & licenses including NOC from Airport Authority of India, National Highway Authority of India, National Medical Commission, State Medical Councils, Nursing & Pharmacy Council of India etc.

## HOSPIMED MAJOR SCOPE OF WORK

- Complete Concept to Commissioning of Hospital Project.
- Preparation of Project Report - DPR / PPR, Market Survey, Feasibility Study, Demographic Study and other Study.
- Soil Testing, Contour Mapping, Total Station Survey, Project Master Planning
- Financial Viability Analysis, Project Finance arrangements by all leading Banks / NBFC.
- New Project Set-up from Green field Stage to Completion Stage.
- Project Building Approvals and All Statutory Legal Formalities Completed Before Time.
- Project Construction under the supervision of Senior Architects and Engineers.
- Electrical Load Calculation, Isolation Transformer, Electrical Control Panel, Air Handling Unit, Electrical Earthing, Fire Safety Systems, Medical Gas Pipeline System, WTP, ETP, STP, Hospital MEP & HVAC, Civil Work & Superstructure Construction, Project Fit-out & Interior Work With All Attachments, Their Testing and Certification.
- Medical Equipment Planning (BOQ) and Timely Installation and Maintenance Plan.
- Hospital Software Planning, Website Development, Digital Marketing, Press, Media Management and Publicity through all leading News Coverage on opening Ceremony etc.
- International Standard Project Completion & Handover.

## ABOUT US



### HOSPIMED GROUP PROFILE

HOSPIMED is a leading & reputed brand in India, incorporated under the Companies Act, 1956 and limited by Shares, Ministry of Corporate Affairs, Government of India. The Company has obtained his all Trade Marks, Copyright, ISO, CRISIL, NSIC and MSME and all Legal matters.

Today, HOSPIMED is the fastest growing & Leading Engineering / Architecture / Construction Interior Designing / Management Consulting / Infrastructures and Turnkey Hospital Project Management Solutions Company in India & Abroad.

The Company has extended his wide foot print in West Bengal, North East, Bihar, Orissa, Jharkhand, Sikkim, Delhi, NCR, UP and many other cities in India. The Company has also expanded expertise in Nepal, Bhutan, Bangladesh and other parts of the World.

HOSPIMED is providing latest know-how and best technical expertise to their Clients for developing their Projects with innovative techniques and professional activities in the field of Hospital & Healthcare Project - Architects / Engineering / Construction / Interior Designing / Management Consulting infrastructures and Turnkey Project Management Company including Project Consultancy Services as per the International Standard at most affordable cost.

### HOSPIMED GROUP MISSION

HOSPIMED is dedicated to developing quality work, unique concept for developing new projects & creating opportunities for the community.

### HOSPIMED GROUP VISION

To contribute to the well-being of our clients, their staff by enhancing the quality of life through Projects and Business activities.

### HOSPIMED GROUP VALUES

At the core of all our activities lies our code of ethics which governs our values. These values form the basis of our operations and interactions; - Open and honest communication

- Reliability
- Professionalism
- Respect for clients' need
- Dedication to the advancement of client's objectives

### WHY HOSPIMED GROUP

We have earned the confidence of our Clients due to our positive commitment to them in every aspect of our interactions with them. Our Comprehensive Services like unique concept, design, quality Construction, Unique Interior Designing, Project guidelines services can save considerable costs for our clients and unique solutions

We are preferred by our clients for these reasons

- Timely Services
- Industry leading Competitive Price
- Dedicated and Professional Team Innovative Techniques

## BOARD OF MANAGEMENT

### **Prof. R. K. Yadav**

Serving 30 Years in Healthcare Industry.

Ph. D – Research Scholar (Healthcare Management), MHA, M. Phil (USA) in Hospital & Health Systems Management – CMC Vellore, BITS Pilani, Tulane Medical University, USA.

Managing Director – Hospimed Group of Companies, Chairman & Managing Trustee Hospimed International Healthcare Foundation (HIHF), Visiting Faculty for UG & PG Program for Hospital Management, Nursing College, Para Medical College. Member – Indian Chamber of Commerce.



### **Mrs. Asanta Yadav**

B.Com, MCM, MBA, Executive Director – Hospimed Group, Managing Trustee – Hospimed International Healthcare Foundation (HIHF), Festival Director – TISFF, Kolkata, Media Head – Hospimed Entertainment, Kolkata.

### **Dr. (Maj.) Anuj Kanti Poddar**

MBBS, MS, FMAS, Renowned General & Laparoscopic Surgeon. Medical Director & Medical Administration – Hospimed Group of Companies, Vice President – Hospimed International Healthcare Foundation, Commissioner (Medical) – St. John Ambulance (India), No.- II (W.B.) District. Hony. Secretary – St. John Ambulance (India), Barasat Centre, W.B. 40 Years above experience as a Medical Practitioner in Various Corporate & Govt. Hospitals.

### **MR. AJAY KUMAR YADAV**

Regional Director – Northern India for NABH, NABL, ISO, Quality Control & other accreditation etc.

### **Mr. KOUSHIK DAS, B.TECH (CIVIL)**

Engineer & Project Head

### **MD. MIRAZUL HOQUE, B.TECH (CIVIL)**

Engineer & Project Head

### **MR. BISWAJIT BISWAS, M. COM (ACCOUNTING)**

Project Accountant

### **MR. SUBHROJIT MONDAL**

Creative Director – 3D & Walkthrough

## BOARD OF MANAGEMENT

**MD. SHANAWAZ KHAN**

Interior Designer & Project In charge

**MR. ADITYA RAJ, B. TECH (CIVIL)**

Engineer & Project Supervisor

**MD. RAFIKUL MOLLA**

Project Supervisor

**MS. NASIMA SULTANA**

Project Coordinator

**MS. ABHIJIT ROY**

Project Coordinator

**MR. RANJIT GOPE**

Project Coordinator

**ADVOCATE MR. SANTANU SARKAR**

Legal Advisor, GST.

**SK. WAIS AKRAM**

Interior Designer & PRO

**Dey & Kumhar & Company, Advocate Mr. Nageshwar Kumhar**

**Trademark & Copyright.**

**ADVOCATE Mr. ANUBHAV SINGH, CALCUTTA HIGH COURT & LEGAL CONSULTANT**

Today, Hospimed Group has more than 200+ Professional team members who are developing Various Projects from Greenfield to Completion stage with various specialization of work like Architectural Work, Engineer, Interior Designer, Project Elevation, Project Pile Foundation work, Super Structure Work, Construction Work, Water Proofing, Plumbing Work, Drainage, Water Reservoir, Fire Safety Work - Hydrant, Sprinkler, Marble/Tiles Work, Interior Designing Work, Furniture Work, Designer Sofa Work, False Ceiling Work, Aluminum Work, SS Railing with Glass Work, ACP & Structural Glass of the Elevation Work, Painting, Wall Work, Air - Conditioning Work - Central A/C System, Duct, Cassette A/C, Split Window A/C, Electrical Work, Glass /Toughened Glass Work, Stair (Iron / Steel) and many other allied work.

**MR. SWARUP SANTRA,**  
**DIPLOMA (CIVIL)**

Engineer & Project Supervisor

**MR. GOPAL PRAMANICK**

Office Assistant

**MS. ANWESHA ADHIKARY**

Health Care Project Consultant

**MS. DEBJANI DUTTA**

Health Care Project Coordinator

**MR. KAUSTAV GHOSH**

Health Care Project Consultant

**MR. VISHAL KUMAR, C.A**

Chartered Accountant & DPR - Financial  
Analysis Expert

**LEXMOTION, ADVOCATE**

**MR. SANTANU GUCHAI**

Legal Advisor - Trademark & Copyright



# HOSPIMED NEWS MAGAZINE PUBLICATION, AWARDS & CERTIFICATES



**Hospimed Group:  
Building Certified  
Healthcare Projects at  
Affordable Cost.**

**Affordable & Low Cost  
Hospital Model across  
the Globe: Strategic  
management and  
exclusive case study.**

**Doctors & Healthcare  
Entrepreneurs**

**(1000 Bedded Multi Super  
Specialty Hospital Project  
at Janakpur, Nepal under the  
leadership of Respected Sri.  
Upendra Yadav, Deputy  
Prime Minister, Health &  
Population Minister Office,  
Government of Nepal in  
association with Sweden  
Government on 1st August  
2019 at PMO Office,  
Kathmandu, Nepal.)**

**(1000 Bedded Multi Super  
Specialty Hospital Project at  
Janakpur, Nepal under the  
leadership of Respected Sri.  
Upendra Yadav, Deputy  
Prime Minister, Health &  
Population Minister Office,  
Government of Nepal in  
association with Sweden  
Government on 1st August  
2019 at PMO Office,  
Kathmandu, Nepal.)**

**(Award received by Prof.  
R. K. Yadav, MHA, M. Phil  
(USA), Managing Director  
of Hospimed Group of  
Companies from "All India  
Achievers Award"-  
Healthcare, New Delhi on  
9th March 2013 By Ex.  
Cabinet Minister, Union  
Minster, Ex. Governor and  
Ex. Chief Justice of India.)**

**(Award received by Prof.  
R. K. Yadav, MHA, M. Phil  
(USA), Managing Director  
of HOSPIMED GROUP  
from Infrastructure  
Development Award, New  
Delhi on 6th July 2013 by  
Ex. Cabinet Minister, Ex.  
Governor, Ex. Chief  
Justice of India & Ex. Chief  
Election Commissioner.)**

**Prof. R. K. Yadav, M. Phil  
in Hospital Systems  
Management  
Programme, CMC,  
Vellore, Tamil Nadu &  
BITS, Pilani, Under  
- Tulane Medical  
University, New Orleans,  
USA, Year - 2001**

# HOSPIMED GROUP OF COMPANIES – BORAD OF DIRECTORS :



## HOSPIMED BOARD OF DIRECTORS PROFILE

### PROF. R. K. YADAV, MANAGING DIRECTOR & CHAIRMAN OF HOSPIMED GROUP

Prof. R. K. Yadav MHA, M. Phil CMC Vellore, BITS Pilani under Tulane Medical University, New Orleans, USA, Ph.D - Research Scholar (Healthcare Management), Expert in Hospital & Health Systems Management & Healthcare Projects, 30 years Core experience in Healthcare Industry Nationally & Internationally.

Prof. R. K. Yadav who has earned his reputation & good will in Healthcare Industry within very short period of time for his hard work, dedication & Positive Commitments. He had started his healthcare career journey since 1996 from the level of a “Management Trainee” at Apollo Hospitals, Chennai and today he is running Group of Companies as a “MANAGING DIRECTOR & CHAIRMAN” of HOSPIMED GROUP OF COMPANIES.

Prof. Yadav has 30 years Core experience in Healthcare Industry Nationally & Internationally with strong vision to create professional environment & Quality Service in each and every new Healthcare Project-Small Set-up to Corporate Hospital.

Today, Prof. Yadav is a one of the leading & reputed Consultant in Healthcare Industry in India and abroad and developing various kinds of projects in Healthcare Industry – MBBS, BAMS Medical College Projects, Multi Super Speciality Hospital Projects, Cancer Hospital, Trauma Care Hospital, Nursing College, Para Medical College, Health Safety Programs, Hospital Management UG & PG Programs etc.

Member - Indian Chamber of Commerce

### MRS. ASANTA YADAV, EXECUTIVE DIRECTOR OF HOSPIMED GROUP

Mrs. Asanta Yadav is Master in Business Administration specialized in HR from Sikkim Manipal University, India. Graduated from "Maulana Azad College of Arts, Science & Commerce, Aurangabad.

Mrs. Yadav has worked more than 20 years in Corporate World – Business, Media, Entertainment, Engineering College and Product Industry including Service industry having specialization in Finance, Accounts and Administration.

She is well renowned in Media, Festival Director in International Film Festival - TISFF, Actor, Director & Producer in Tele Film, Short Film, Commercial Film, TV Serial, Modeling, Video Album and other areas.

Today, her dream is to establish "HOSPIMED GROUP" a largest & leading Consulting & Turnkey Project Management Company in India and Abroad.

Moreover, she strongly believes to complete the project in a professional manner at low cost model Corporate Hospital.



# HOSPITAL PROJECT WORK FLOW & SCOPE OF WORK OF HOSPIMED



TURNKEY PROJECT SOLUTIONS AGREEMENT WITH HOSPIMED



LAND SELECTION



FINALIZATION OF LAND AGREEMENT, SOIL TEST, TOTAL STATION SURVEY,  
PROJECT MASTER PLANING



MARKET SURVEY / FEASIBILITY STUDY GUIDELINE BY HOSPIMED



PROJECT REPORT / DPR FOR BANK LOAN GUIDELINE BY HOSPIMED



ARCHITECTURE DRAWING / DESIGNING / PLAN SANCTION GET APPROVED BY HOSPIMED



PROJECT CONSTRUCTION WORK GUIDELINE BY HOSPIMED



PROJECT INTERIOR WORK, FIRE AND AIRCONDITION & OTHER WORK BY HOSPIMED



PROJECT INFRASTRUCTURE WORK FIRE SYSTEMS, ELEVATORS, SILENT GENSETS,  
ISOLATION TRANSFORMER, ELECTRICAL CONTROL PANEL, SOFTWARE, HARDWARE, KITCHEN,  
LAUNDRY & OTHER SERVICES GUIDELINE BY HOSPIMED



MEDICAL EQUIPMENT BOQ, PURCHASE PLANNING, INSTALLATION PLAN, AMC, CMC & OTHER WORK  
GUIDELINE BY HOSPIMED



MANPOWER PLANNING, INTERVIEW, SELECTION, INDUCTION, TRAINING OF DOCTORS NURSES, PARA  
MEDICAL TEAM, TECHNICIANS, MANAGEMENT STAFF GUIDELINE BY HOSPIMED



PROJECT TRIAL RUN GUIDELINE BY HOSPIMED



PLANNING FOR INAUGURATION / PRESS & MEDIA, MARKETING & PUBLICITY AND PROJECT  
OPERATIONS GUIDELINE BY HOSPIMED



APPLY FOR NABH, NABL, JCI, QCI, QAI AND OTHER STANDARDS FOR SOP'S, AUDIT AND OTHER  
FORMALITIES FOR ACCREDITATION PROCESS GUIDELINE BY HOSPIMED

# ADVANCED NABH COMPLAINT MODULAR OPERATION THEATRE



## G.I. Wall & Ceiling PUF Panel

Wall & Ceiling Panel Having 50 mm thick is made out of G.I. thickness not less than 0.5 mm in front side of the panel and 0.5 mm thick PPGI in back filled with polyurethane foam. Having density 40kg +/- per M3

## S. S. Wall & Ceiling PUF Panel

Wall & Ceiling Panel Having 50 mm thick is made out of S.S. thickness not less than 0.5 mm in front side of the panel and 0.5 mm thick PPGI in back filled with polyurethane foam. Having density 40kg +/- per M3

## Wall Painting

Surface Preparation and removal of dust and loose particles on walls and apply 2 coat metal putty, one coat primer and 2 coats of anti-bacterial, Anti- Fungal, Make : Jotun

## Laminar Air Flow System

Supply, Installation, Testing and Commissioning of Laminar Air Flow System. The laminar should be constructed with Aluminum sheet Laminar system will introduce the highest air quality into the operation theatre. Air should be diffused into the room uniformly over the total area through perforated stainless sheet SS 304 grade. The air diffusers should be installed in a manner which allows them to be removed for easy maintenance of air filter. HEPA filters of H14 Grade 99.97% efficiency are used to ensure high quality clean air is supplied and under tight control of bacterial infection system.

## Rectangular Ducting in G.I. Sheet

SITC of Ducting will be in G.I. sheet ducts having thickness of minimum 24 Gauge, including insulation & necessary G.I. hangers/ supports, supported by ceiling suspended hardware and GI grid applied volume control duct dampers, accessories, vanes, 3 mm EPDM rubber gasket etc. The joints will be air tight, sealed with Silicone Sealant for leak tight installation and will be supported from ceiling with tie rod, anchor fasteners as per the recommendation and specification

## AIR HANDLING UNIT+ Condensing Unit

Supply , Installation, Testing and commissioning of Double skin air handling unit in thermal break profile comprising of return air plenum section, fan section with fan, cooling and dehumidifying section (pre filter having efficiency 90% down to 10 micron, Microbe filters having efficiency 95% down to 5 micron, mixing section with all necessary control and accessories for air side. The outdoor skin will be 0.6 mm pre coated & indoor skin 0.6 mm GI Sheet. Unit shall be horizontal or vertical draw-through type arranged for horizontal discharge having 6 row DX designed at 500 fpm

## Bio Air Conditioning

Conditioning for Laminar flow 3000 CFM including Condensing unit 5.5 + 5.5TR Humidity & Temp. Control, maintaining the positive pressure. Comprising of Double skin AHU, Electrical control panel, Thermostat etc. Installation of unit including up to 10 RMT. Copper piping, MS stand, expansion valve, insulation, cabling etc. Pre filters having dust spot efficiency of 05 to 10 microns

CFMS.P. (MM)T.R. 3000125 5.5 + 5.5

Condensing Unit (Outdoor Unit), Electrical Control panel & AHU

## Return Air Risers

SITC of Return Air Riser will be in GSS Pre-coated sheet with GI hardware and perforated Grills. Risers will be sealed with silicone sealant, and Elastomeric Foam Gaskets etc. It will have provision of 10 Micron Pre- Filter with filter holding clamps. Suction Perforated Grille SS 304/Aluminium.

## Hermetically Sealing type of Manual Sliding Door

having thickness of 40-48mm of size 1500 x 2100 mm single leaf with PUF core sandwiched between Antimicrobial High Pressure laminates (HPL), with viewing window of size 300 x 300 mm. Sliding Door leafs runs on (nylon wheels) within an extruded heavy duty aluminum alloy extrusion track, for smooth effortless sliding with the help of handle

# ADVANCED NABH COMPLAINT MODULAR OPERATION THEATRE



## Anti- Static Vinyl Flooring

Supply, Installation and Commissioning of Vinyl Anti Static Flooring in Roll form seamless with perfectly curved flash-covings, resistance to mechanical stresses and dynamic loads and having ESD/ EMI (conductive) protection characteristics, 2 mm thick, washable. The floor will be laid flat along with self-levelling compound within a tolerance of  $\pm 3$ mm over any 30 Sq.mtr areas. Copper grounding strip minimum of 0.05 thick and 50 mm width will be laid flat on the floor in the adhesive and connect to copper wire of grounding attaching it to main earthing strip/ground. The flooring will be antifungal/anti microbial, scratch, fire, chemical, slip resistant, non corrosive and smooth. The floor finished level will pass over a concealed cove former and continue up all the walls on all four sides by 100mm

## Anaesthesia Pendant

Supply, Installation, Testing and Commissioning of Anaesthesia Single Arm Pendant and console made up of High grade Aluminium extrusion, Comprising of

- 1 x Arm 800mm having a 1 X drop tube having a carrying capacity of maximum load of 85 kg - Rotation of 330 deg.
- 1 x Basic Console - 800mm
- 1 x Adjustable shelf (Tray)
- 6 x Mains Socket (5/15Amp) Electrical 230V
- 4 x Medical Gas Terminal & Hose Assembly (1 x Oxy, 1 x Vac, 1 x Air(4bar), 1 x N2O)

## Surgeon Control Panel

Supply, Installation, Testing and Commissioning of Tile based and Membrane Type Surgeon Control Panel, mounted flush in the theatre wall, comprising of the following:

- 1 No. Day Time Clock
- 1 No. Elapsed Time Clock
- 1 Set ON/Off & Dimmer for Peripheral Lights
- 1 Set Digital Medical Gas Indicator
- 1 Set indicator for Temperature and Humidity display
- 1 No. Hands Free Telephone

## Two Plate LED X-Ray Film Viewer - Dimmable

Supply, Installation, Testing and Commissioning of Two Plate dimmable X-Ray viewing screen designed to provide a high level of control luminance without flicker. On/Off and dimming operation should be through integrated PCB.

## Writing Board

Supply and Installation, Testing and Commissioning of Operating Writing List Board of size (948mm X 648mm)

## LED Peripheral Lights

Supply and Installation, Testing and Commissioning of Operating Writing List Board of size (948mm X 648mm)  
Supply, Installation, Testing and Commissioning of Recess mounted IP65 Protocol, non-hygroscopic LED Peripheral Lights having Size – 600 X 300mm Recessed Lights.

## Pressure Relief Damper

Supply, Installation and Commissioning of Pressure Relief Damper having multi 304 graded stainless steel blades to control room air pressure (Air Positive Pressure).

## Storage Unit

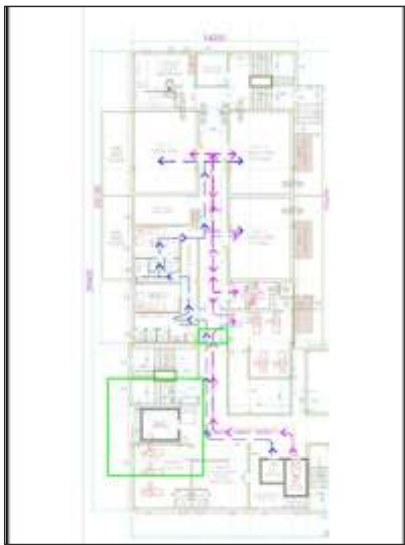
Supply, Installation, Testing and Commissioning of Storage Unit of size 1666 X 865 X 350 mm having two shelves and made out of G.I. having minimum 5 mm thick glass door and mounted flush with the theatre wall.

# ADVANCED NABH COMPLAINT MODULAR OPERATION THEATRE



## 2-Bay Scrub Sink, Manual

Mixture valve and 2 nos. solenoid valves along with Manual Option Foot Operated mechanism. Anti-splash metal body construction made of Stainless Steel Grade 304 polished finished. The scrub sink is provided with front access panel for ease of maintenance and repairs. 2- Position size 1500 mm long.



# HOSPITAL PROJECT ARCHITECTURE, DRAWING, DESIGNING, MEP, HVAC BY HOSPIMED



Sample Drawing of Surveyor



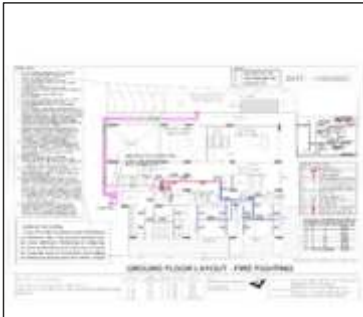
Land Area with Hospital Building



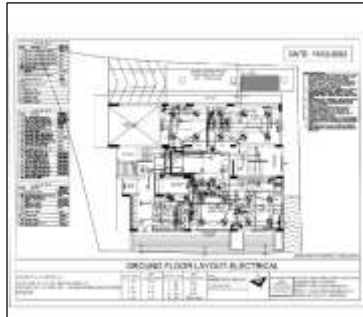
Hospital Facility Floor Plan



Hospital Fire Basement Floor Plan



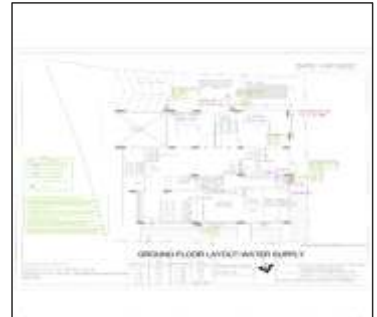
Sample Drawing of Surveyor



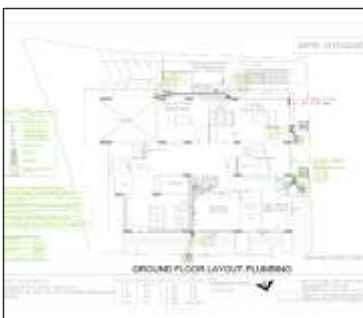
Land Area with Hospital Building



Hospital Facility Floor Plan



Hospital Fire Basement Floor Plan



Hospital Plumbing Ground Floor Plan



Hospital 3D Building Elevation View



Hospital 3D Internal Ground Floor View



Hospital 3D Internal Ground Floor View



Hospital 3D Internal View



Hospital 3D Internal View



Hospital 3D Internal View



Hospital 3D Internal View

## OUR PRESTIGIOUS CLIENT



We have done various Project Consultancy, PPR, DPR, Feasibility Study, Market Survey Report, Turnkey Project Guidelines, Architecture, Drawing, Designing, Planning, MEP, Interior, Construction, Fire & Safety, MGPS, Modular OT and all required services for our reputed Clients in India and Abroad in the Field of MBBS, BAMS Medical College Projects, Multi Super Speciality Hospital & Healthcare Projects, Pharmaceutical Company, Export & Import, International Business Trade Organizer via various Chamber of Commerce worldwide.

- 1000 Bedded Hospital Project at Janakpur, Government of Nepal under Sweden Government collaboration under the Deputy Prime Minister & Population Minister, Government of Nepal, Kathmandu, Nepal.
- 100 Bedded M.G. Hospitals, M.G Road, Kolkata, India.
- 100 Bedded Shree Keshav Heritage Hospital, Madhubai, Bihar, India.
- 300 Bedded B. K. Healthcare & Medical Institute, Malda, West Bengal, India.
- 200 Bedded A. R. Hospital, Murshidabad, West Bengal, India.
- 150 Bedded Hospital, Kalyani General Hospital, Kalyani, West Bengal, India.
- 100 Bedded Hospital, Care Vista Healthcare Private Limited, Bolpur, West Bengal, India.
- 300 Bedded Sree Sree Maa Swapneswari Specialty (ASD) Hospital, Nursing School, AYUSH Hospital under Sree Sree Maa Swaneswari Charitable Foundation, Kolkata.
- 75 Bedded Hospital, Maa Saraaswati Multidisciplinary Nursing Home, Ghatal, West Bengal, India.
- SRM Medical College & Medical Sciences, Chennai, Tamil Nadu, India, Project – Kolkata, India.
- 200 Bedded Apollo – Orient Hospital Project, Madurai, Tamil Nadu, India.
- 100 Bedded Sea Be Cure Multi & Super Specialty Hospital, Haripur, Ranigunj, West Bengal, India.
- 150 Bedded Burdwan Institute of Medical Sciences Pvt. Ltd. (BIMS) Multi and Super Specialty Hospital, Burdwan, West Bengal, India.
- Dr. S. K. Sen Healcare Private Limited (An International Standard Ayurvedic & Unani Chain of Institute), Barasat, Kolkata, India.
- 200 Bedded Romalinda Hospital and Diagnostic Center with other stream of Medical Industry Allopath, Homeopathy, Naturopathy, Ayurvedic, Unani, Blood Bank and other set-ups at Madhyamgram, Kolkata, India.
- G K Care and Cure, Durgapur, West Bengal, India.
- HEALTH HUB, Golpark, Kolkata, India.
- Bharati Healthcare & Diagnostic Centre, Kachrapara, West Bengal, India.
- Thriven Hospitals & Research Institute Pvt. Ltd., Suri, Birbhum, W.B. India.
- Dr. S. K. Maity, Project at Kalikapur, E.M. Bypass, Kolkata, India.

## OUR PRESTIGIOUS CLIENT



- Healing Minds and Healthcare Pvt. Limited, Gariahat, Kolkata unit, India. (A Professional & Renowned NRI Team of Doctors - United Kingdom) and Proposed Hospital Project, Kolkata, India
- 200 Bedded Steel Authority of India Employees Cooperative Credit Society Limited, ISPAT Hospital Project, Sonarpur, West Bengal, India.
- 125 Bedded Bengal Grace Hospital now Sebabrata Hospital, Uluberia, Howrah, West Bengal, India
- 150 Bedded Kalpataru Hospital now NH Hospital, Barasat, South 24 Pdns, West Bengal, India.
- 100 Bedded Patliputra Nursing Home, Dr. Nirmal Drolia, Dhanbad, Jharkhand, India
- 200 Bedded HLG Memorial Charitable Hospital & Research Institute, Asansol, W.B., India.
- 50 Bedded Silver Jubilee Hospital, Liluah, Howrah, West Bengal, India.
- SLX Healthcare Pvt. Limited, Berhampur, West Bengal, India.
- 75 Bedded New Avenue Nursing Home Pvt. Ltd., New Town, Rajarhat, Kolkata.
- 100 Bedded BMRI Hospital, Thakurpukur, Kolkata, India.
- 100 Bedded Sharanya Hospital, Burdwan, West Bengal, India.
- 75 Bedded Rameswara Nursing Home Pvt. Ltd., Kolkata, India.
- 200 Bedded Subham Hospital, Cooch Behar, West Bengal, India.
- 200 Bedded Glocal Healthcare Systems (P) Ltd., Kolkata, India.
- G K Care and Cure, Durgapur, West Bengal, India.
- Silverstar Eye & Dental Hospital, Ranaghat, West Bengal, India.
- 100 Bedded D. N. Roy Medical Inst. & Hospital, Kankinara, West Bengal, India.
- Ruebens Diagnostic Centre, Park Street, Kolkata, India.
- Tirupati Awaz Pvt. Limited, Kolkata, India – 150 Bedded Tirupati Hospital, Sonarpur, West Bengal, India.
- 1000 Bedded Ibrahim Iqbal Memorial Hospital Limited, Chittagong, Bangladesh.
- BGC Trust Medical College, Chittagong, Bangladesh.
- BGC University Chittagong, Bangladesh.
- 200 Bedded Jubilant Kalpataru Hospital now N. H. Hospital, Barasat, West Bengal, India.
- 75 Bedded City Life Hospital, Barasat, West Bengal, India.
- R. N. Diagnostic Centre Private Limited, Belghoria Expressway, Dum Dum, Kolkata, India.
- 200 Bedded Heart Line Hospital & Research Institute Pvt. Ltd. R K Tala Road, P.O. & P.S. – Sainthia, District – Birbhum, Harish Kopa Mouza, Sainthia, Birbhum, West Bengal, 731 234.

## OUR PRESTIGIOUS CLIENT



- Bengal Meditech Institute of Medical Sciences - MBBS Medical College Project, 200 Bedded Multi Speciality Hospital Projects & Nursing College Projects (A unit of Bengal Meditech Multi Speciality Hospitals Limited), Sukpukuria, Basanti Highway, P.S. - KLC, District - 24 Pgns (South), Kolkata -700135, West Bengal
- Shree Keshav Heritage Institute of Allied Health Sciences - Nursing College, Para Medical & MBBS Medical College Project ( A Unit of Shree Keshav Heritage Healthcare & Educity Foundation, Madhubani, Bihar
- Pranali Ghosh Charitable Foundation, Healthcare Project at Dharma More, District - Pashim Medinipur, West Bengal, Dr. Pranali Ghosh, Director.
- 101 Bedded RX Anweshana Hospital ( A unit of RX Anweshana Pvt. Ltd.) 100 Bedded Multi & Super Speciality Hospital, Battala Chawk, Medinipore, District - Paschim Medinipore, West Bengal
- 20 Bedded AYUSH Nursing Home, Kalimpong, West Bengal, Dr. Mira Sinha.
- 100 Bedded Multi & Super Speciality Hospital, Panchapandav Healthcare Private Limited - Barasat, West Bengal.
- 500 Bedded Hospital & medical College St. Lords Educational Trust (R) - MBBS, BAMS Medical College Project, Bangalore, Project site - Mandya District, Malvalli Taluk, B G Pura Hobli, T. Nasipura Main Road, Karnataka.
- 100 Bedded Multi Speciality Hospital, Chandraraj Hospital LLP - Dakshin Bazar, Chandrakona, Paschim Medinipore, West Bengal.
- 100 Bedded Multi Super Speciality Hospital Neelshankar Multi & Super Speciality Hospital - ( A Unit of Neelshankar International Association), Bankura, West Bengal
- 100 Bedded Madhyamgram, West Bengal Romalinda Multispeciality Hospital & Diagnostic Centre
- 100 Bedded Citylife Hospital, Noapara, Kolkata, West Bengal 700126
- 150 Bedded Multi & Super Specialty Hospital, S B GROUP of INSTITUTIONS - Raiganj, Uttar Dinajpur, West Bengal
- 100 Bedded Multi & Super Specialty Hospital PANNA MULTI SPECIALITY HOSPITAL, Dr. Upendra Nath Chowdhury, Project at Kushpata, Beliaghata, Daspur, Ghatal, West Bengal R
- REMEDEX - A leading & Trusted Chain of Diagnostic & Poly Clinic Chain in Ankurhati, Howrah, West Bengal
- 80 Bedded Multi Specialty Hospital at Nodakhali, South 24 Pgns. West Bengal, Mr. Rabindra Nath Mondal



## CONTACT US

HOSPIMED HEALTHCARE PROJECTS INC.  
HOSPIMED HEALTHCARE PROJECTS PRIVATE LIMITED  
HOSPIMED INTERNATIONAL HEALTHCARE FOUNDATION

(An ISO 9001:2015 Certified Company)

(SSI-MSME (EM-II), Govt. of West Bengal  
Registered Company) (NSIC, Govt. of India -  
CRISIL Verified Company)

Hospimed Group - All India 06 th rank - Best & Low  
Cost Hospital Project Consultant in .India

National & International Hospital Project Consultant  
PMO & Health Ministry Office, .Nepal, IIMHL,  
Chittagong, Bangladesh & other South African  
Countries

HOSPIMED GROUP - A Leading & Trusted Brand in  
Healthcare Projects - MBBS Medical College Project,  
Multi Super Speciality Hospital Project, Hospital  
Project Consultancy, Nursing College, Para Medical  
College, BAMS AYUSH Medical College Project &  
Other Healthcare Projects.

## HOSPIMED - TURNKEY SOLUTIONS UNDER ONE ROOF SERVICES

DPR, Soil Testing, Project Architecture, Structural  
Drawing, Designing, Engineering, Hospital  
Department & facility Layout, Project Construction,  
Project Interior, Project infrastructure Set-up,  
Project Medical Planning, Equipment Purchase,  
Installations, Other Allied work - Silent Gensets,  
Elevators, Isolation Transformer, Electrical Control  
Panel, Air Conditioning, Earthing, Fire Fighting  
Systems, Medical Equipments, Installation, Oxygen  
Pipeline Systems, Central Suction, Liquid  
Medical Oxygen (LMO) Plant, Pressure Swing  
Adsorption (PSA) Plant and all Post Project -  
Standard Operating Procedure (SOP), Hospital  
Operations including Hospital Branding, Press,  
Media Promotion including Market Positioning  
Strategy & Implementation.

### Corporate & Registered Head Office-

HOSPIMED HOUSE

Premises No.- 1652,

📍 FB-152, Rajdanga Main  
Road, Police Station - Kasba  
Opposite - GST Bhavan  
Kolkata-700107, West Bengal  
India.

Contact Number

Business Enquiry

📞 +91-98300-94625

WhatsApp Enquiry -

📞 +91-70011-44674

✉ hospimedfoundation@gmail.com

✉ hospimedgroup@gmail.com

Websites

🌐 www.hospimedgroup.com

🌐 www.hospimedfoundation.com

### Branch Address

(Medinipur //kharakpur) :-  
Narendrapur, Dharma Traffic More  
Paschim Medinipur-721101.  
West Bengal , India